

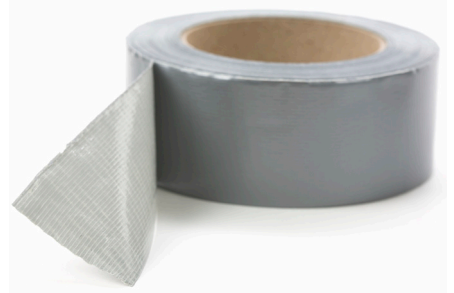


Setting up your Ollie rims tubeless:

Congratulations on purchasing our tubeless compatible Dice Ollie rims. So how exactly does one set them up for tubeless FAT riding?

Duct tape - straight up, you want duct tape. No fancy, expensive, cool, branded tape required. Just good ole fashioned **duct tape**.

Before you start, go around the bead of the rim, you will find a couple of holes that are these to allow proper draining of the anodizing fluid. These are best sealed up. A drop of superglue or sealastic works best.

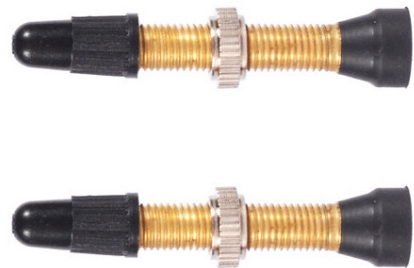


Make sure you have the correct width duct tape. You do **not** need to tape the bead surface itself on our rims if you are using a tubeless compatible FAT tyre like the Vee Tire Co range.

Only if your tyre is oversized at the bead (Surly, Maxxis), then you may need to add some extra tape over the bead surface (under the hook) to beef up the surface)

Valves - you'll be wanting a pair of tubeless valves. We don't include them as there are plenty of brands out there selling tubeless valves and we didn't want to be "just another one" offering the same valves from Taiwan as everyone else.

Make sure that the valves you select, have thread all the way down the valve shaft. Some tubeless valves are designed with traditional double wall mtb and road rims in mind and they finish the thread up to 10mm from the bottom. Single wall FAT bike rims, like the Ollie, require valves with thread all the way down. Like these WTB TCS valves.



Fitting a tyre - If planning to run tubeless, then you need to give some thought to your choice of tyre. Not all tyres are designed to be run tubeless. For this reason, we recommend the tyres from Vee Tire Co as we know they work well. Plus, they have a wide range of tread patterns and width options.

Fitting the tyre is no more or less difficult than with any tyre and rim. Though, for tighter fitting tyres, you may want to spray the bead with a little bit of soapy water to allow the bead to slide better and to seat properly. Once this done, pour about 150mls of your favourite sealant in and inflate to about 20psi. Check the that the bead is seated properly and evenly around the rim.

If all is good at this point, hold the wheel "flat" and slosh the sealant around a bit to help it seal the sidewalls of the tyre. Spinning the wheel is also helpful to ensure that the sealant is properly dispersed throughout the entire wheel.

Finally - go ride your bike!